



SUPPLEMENTARY REGULATIONS

ZWARTE CROSS OPEN FINAL – LICHTENVOORDE

This race is organized in accordance with the provisions in the Zwarte Cross Open Regulations, KNMV Regulations, and this Supplementary Regulation. Violations of the “Paddock Invitees Regulations” may also result in disqualification. Riders are also responsible for any persons attending under their account. Any matters not covered by these regulations will be decided by the organization. The interpretation of this Supplementary Regulation falls under the authority of the Jury. In case of uncertainty or discrepancy in interpretation, the Dutch version shall be binding.

Location: Lichtenvoorde

Dates: July 18, 19, 20 – 2025

Classes per competition day:

Friday	18-07-2025	50cc, 125cc, Classic Open.
Saturday	19-07-2025	85cc, Dames, Classic 125cc.
Sunday	20-07-2025	250cc & 500cc .

Organizer: De Feestfabriek Alles komt goed B.V.

Contact: E-mail: info@livingfortheweekend.mx

Website: www.livingfortheweekend.mx

Track name: “De Schans”

Length	1.500 m
Minimum width	6m
Test track	No
Wash area	Yes
Startgrid	Dirt/ Mesh

1. Directions to the Backstage Roemaat Office:

To access the Zwarte Cross, you must first report to the Backstage Office. You'll need to follow the directions provided. These directions are a separate document, including a route map. You will receive this as an email attachment and it is also available at www.livingfortheweekend.mx.

Opening hours Backstage Roemaat Office:

Thursday, July 17	14:30 – 19:00
Friday, July 18	07:00 – 09:00 & 15:00 – 19:00
Saturday, July 19	07:00 – 09:00 & 15:00 – 19:00
Sunday, July 20	07:00 – 09:00

Please anticipate heavy traffic and plan accordingly – we strongly advise arriving the day before your race day!

At 19:00, those present at the Backstage Roemaat Office will receive a proof of attendance and will be the last ones assisted. Arriving late? Unfortunately, our staff cannot wait for you. Parking at the registration area is not permitted between check-in sessions. You may park at Koningslinde: **Address: Koningslinde 3-15, 7131 MP, Lichtenvoorde.**

2. Registration via Moto Inside QR Code



Just like last year, riders can only check in at the Backstage Office **once**, together with their entire group. Everyone must be present at check-in and will be registered all at once. The rider must show their Moto Inside QR code for scanning. Afterwards, the rider and their group will receive wristbands, which are sealed with heat, granting access to the rest of the festival grounds.

The entire group must be present in person and able to show ID upon request. We emphasize this once again: no exceptions will be made. Make sure you all arrive together and that **each person** receives both a **festival** and **Paddock** wristband.

Don't know where to find your Moto Inside QR code? Check the attachments at the bottom of this information letter.



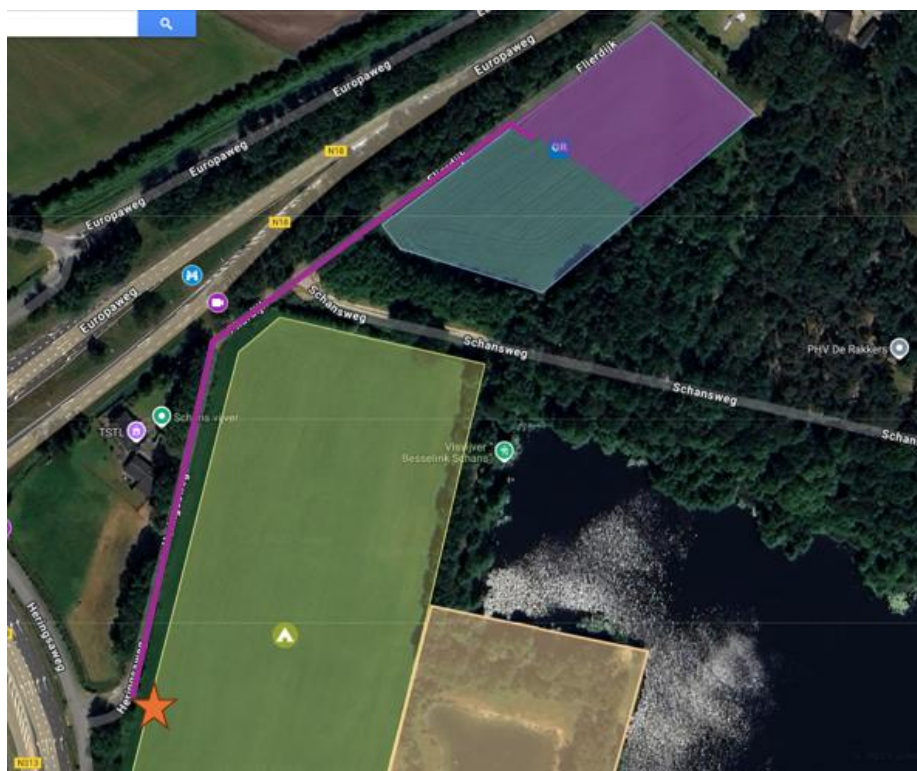
3. Access to the Paddock and/or B-Parking

Want to park together? Then you **must arrive together** at the Paddock. Waiting for each other can be done at the previously mentioned Koningslinde address (see previous page). Once your group is complete, proceed: From the **Backstage Office Roemaat** entrance, follow the route to the 'Rennerskwartier'.

The **first** paddock you'll encounter is for **Fun classes** – **this is not your area**. A little further, you'll reach the **Paddock for Invitees**, marked by the Zwarte Cross Open flag. This paddock is reserved **exclusively** for motocross participants and has its **own regulations**. You can find those on www.livingfortheweekend.mx. Make sure everyone in your group is also familiar with these rules.

Each rider may bring **one vehicle** into the Invitees Paddock. You'll receive a pass for this vehicle at the Backstage Roemaat Office. Hand this pass to the gatekeeper at the Paddock entrance. On the aerial map, the entrance is marked with a star. The purple-colored field nearby is the **B-Parking**. This also requires a special parking pass, which must be clearly displayed behind your windshield — or your car might be towed. Overnight stays are **not allowed** on the B-Parking, and all vehicles must be parked tightly. This year we're hosting more classes than ever before — please help us keep check-in and parking running smoothly. Follow all instructions from our staff on site.

The Paddock entrance is open during Backstage Office hours and closes **30 minutes after the last person has been helped**. Please ensure the paddock is vacated by **Monday, July 22 at 12:00**.



4. Officials

Race Director	: Stefanie van de Meeberg
Chief Technical Steward	: Jeroen Soer
Chief Timekeeper	: Casper Soeter
Medical Staff	: Casper Behrens, Michiel Vaneker (Thu. + Fri)
	: Caroline Meerts, Patrick Harleman (Sat. + Sun.)
Environmental Officer	: Bert Bruggink
Jury President	: Stefan Braken
Organizer's Representative	: Jean-Paul Maas

Meeting with all responsible officials, organizer and medical staff: Thursday, July 17, 2025 at 20:00



5. Technical Inspection, Approval, and Additional Checks

- The **Parc Fermé** opens **20 minutes before** the start of each training or race for technical inspection.
- **Tear-offs are prohibited.**
- All participants in the **125cc, 250cc, 500cc, Classic classes**, and **Women's class** will undergo an **alcohol check** before each training/race.
- All times listed in the schedule are **subject to change**. Sessions may be moved forward or delayed.
Join the **Whatsapp group "Paddock Radio"** via the QR code provided at the Backstage Roemaat Office or displayed in the paddock (at the organization's location near the wash area, marked by Zwarte Cross Open flags).
- Maximum wheel sizes for the **50cc Calimero class**:
 - ◊ Rear wheel: 10 inch
 - ◊ Front wheel: 12 inch
- Additional rules for **protective equipment** apply to the **50cc and 85cc** classes.
These are listed at www.livingfortheweekend.mx

6. Access During Training Sessions & Event Schedule

During the MX class training sessions (07:45 – 10:00), people accompanying a rider **may watch the training sessions** by showing their **Paddock wristband**. They must enter via the **Parc Fermé** and proceed behind the starting gate to the public viewing area (dike).

All other entrances to the circuit remain closed until **10:00**, when the venue officially opens to the public. Only the **designated companion(s)** with a **Parc Fermé + Pitlane wristband** will be allowed into the pitlane. (You can use your **Speedhive** app to view lap times.)

Note: During races, **only** those with a **Parc Fermé + Pitlane wristband** are allowed in. All other spectators must use the **regular public entrance** to access the circuit.

Zwarte Cross 2025 Schedule		
Friday, July 18		
07:45 – 08:45	Track walk for riders and mechanics (on foot only)	
08:45 – 09:05	Training & Qualifying – 50cc Calimero (<i>Shortened circuit via Nozemdome</i>)	4 min free practice + 8 min qualifying
09:05 – 09:30	Training & Qualifying – Open Classic	6 min free practice + 15 min qualifying
09:30 – 10:00	Training & Qualifying – 125cc	6 min free practice + 15 min qualifying
12:00 – 12:15	Line-up – 50cc Calimero	
12:15 – 12:35	Race 1 – 50cc Calimero (<i>Shortened circuit</i>)	10 min + 1 lap
12:20 – 12:35	Line-up – Open Classic	
12:35 – 12:55	Race 1 – Open Classic	15 min + 1 lap
12:40 – 12:55	Line-up – 125cc	
12:55 – 13:20	Race 1 – 125cc	20 min + 1 lap
14:00 – 14:15	Line-up – 50cc Calimero	
14:15 – 14:35	Race 2 – 50cc Calimero (<i>Shortened circuit</i>)	10 min + 1 lap (<i>All 50cc riders receive a medal after this race</i>)
14:20 – 14:35	Line-up – Open Classic	
14:35 – 14:55	Race 2 – Open Classic	15 min + 1 lap
14:40 – 14:55	Line-up – 125cc	
14:55 – 15:20	Race 2 – 125cc	20 min + 1 lap
15.20	Awards Ceremony – Top 3 of 50cc Calimero & 125cc in the Loco Arena	



Saturday, July 19		
07:45 - 08:45	Track walk for riders and mechanics (on foot only)	
08:45 - 09:10	Training & Qualifying – 85cc (<i>Shortened circuit</i>)	6 min free practice + 15 min timed session
09:10 - 9:35	Training & Qualifying – 125cc Classic	6 min free practice + 15 min timed session
09:35 - 10:00	Training & Qualifying – Women	6 min free practice + 15 min timed session
11:45 - 12:05	Line-up – 85cc	
12:05 - 12:25	Race 1 – 85cc (<i>Shortened circuit</i>)	15 min + 1 lap
12:10 - 12:25	Line-up – 125cc Classic	
12:25 - 12:45	Race 1 – 125cc Classic	15 min + 1 lap
12:30 - 12:45	Line-up – Women	
12:45 - 13:10	Race 1 – Women	20 min + 1 lap
14:00 - 14:15	Line-up – 85cc	
14:15 - 14:35	Race 2 – 85cc (<i>Shortened circuit</i>)	15 min + 1 lap
14:20 - 14:35	Line-up – 125cc Classic	
14:35 - 14:55	Race 2 – 125cc Classic	15 min + 1 lap
14:40 - 14:55	Line-up – Women	
14:55 - 15:20	Race 2 – Women	20 min + 1 lap
15.20	Awards Ceremony – Top 3 of 85cc, 125cc Classic & Women in the Loco Arena	

Sunday, July 20		
07:45 - 08:45	Track walk for riders and mechanics (on foot only)	
08:45 - 09:20	Training en Tijdtraining 250cc,	10 min free practice + 15 min timed session
09:20 - 09:55	Training en Tijdtraining 500cc,	10 min free practice + 15 min timed session
11.15 - 11:30	Line-up – 250cc	
11:30 - 12:00	Race 1 – 250cc	20 min + 1 lap
11.45 - 12.00	Line-up – 500cc	
12.00 - 12.30	Race 1 – 500cc	20 min + 1 lap
13.10 - 13.25	Line-up – 250cc	
13.25 - 13.55	Race 2 – 250cc	20 min + 1 lap
13.40 - 13.55	Line-up – 500cc	
13.55 - 14.25	Race 2 – 500cc	20 min + 1 lap
15.30 - 15:45	Start opstellen Superfinale	
15:45 - 16.15	Superfinal Top 15 from 250cc vs. Top 15 from 500cc (P16–18 per class wait in Parc Fermé as reserves)	20 min + 1 lap
16.20	Awards Ceremony – Top 3 of 250cc, 500cc & Superfinal in the Loco Arena	



7. Podium Ceremonies & Prizes

50cc riders will receive a **medal** on the starting area directly after their second race. The **top 3** of each class (including the 50cc Calimero class) will be honoured on the podium in the **Loco Arena** (located at the motocross track). The scheduled times for these ceremonies are listed in the event schedule. Riders in the top three are expected to **freshen up after their second race** and gather at the **Parc Fermé entrance**, where the so-called **inspection tent** is located – this area offers water and shade.

Please do **not return all the way to the paddock**. Riders who finish their second race right before the ceremony must go **straight to the Loco Arena**. The organization will escort them and provide water and a place to freshen up. On the circuit map, the **pink area** indicates where the podium is located.

Podium Rules – Top 3:

Riders must go on stage **with their bikes**, wearing **full racing gear** (helmet not required). Riders may throw shirts, gloves, goggles, etc. into the crowd – this will be photographed. Use this moment for some epic media shots!

Award Schedule:

See event schedule for exact times.

Prize Schedule*

	Women (total)	250cc (total)	500cc (total)	Superfinal 250 vs 500cc
Pos:				
1	€ 500,00	€ 1.250,00	€ 1.250,00	€ 3.000,00
2	€ 300,00	€ 750,00	€ 750,00	€ 1.500,00
3	€ 200,00	€ 375,00	€ 375,00	€ 900,00
4	€ 100,00	-	-	€ 750,00
5	€ 50,00	-	-	€ 675,00
6	-	-	-	€ 550,00
7	-	-	-	€ 500,00
8	-	-	-	€ 450,00
9	-	-	-	€ 400,00
10	-	-	-	€ 350,00
11	-	-	-	€ 300,00
12	-	-	-	€ 250,00
13	-	-	-	€ 200,00
14	-	-	-	€ 150,00
15	-	-	-	€ 125,00

*Wildcard riders are **not eligible** for prize money. Their winnings go to the next eligible (non-wildcard) rider.

For the **50cc, 85cc, 125cc, Classic 125cc**, and **Open Classic** classes, beautiful **prizes for the top 5** are provided, made possible by **Zwarte Cross (festival coins)** and **Putoline (goodie bags)**.



Prize Collection & Payout

Prize pickup and/or payout is separate from the on-stage ceremony in the Loco Arena. Prizes must be collected from the **organization tent** located at the **Paddock for Invitees**, near the wash area (recognizable by the Zwarte Cross Open beach flags). Tip: Did you clock a top-10 time in the morning? Check where the organization is parked on your way back so you don't miss the payout time. **Unclaimed prizes will be forfeited**. Only the rider can collect their prize. If the rider is under 18, a **parent/guardian/chaperone must accompany** them to collect cash prizes.

Pickup Times per Class

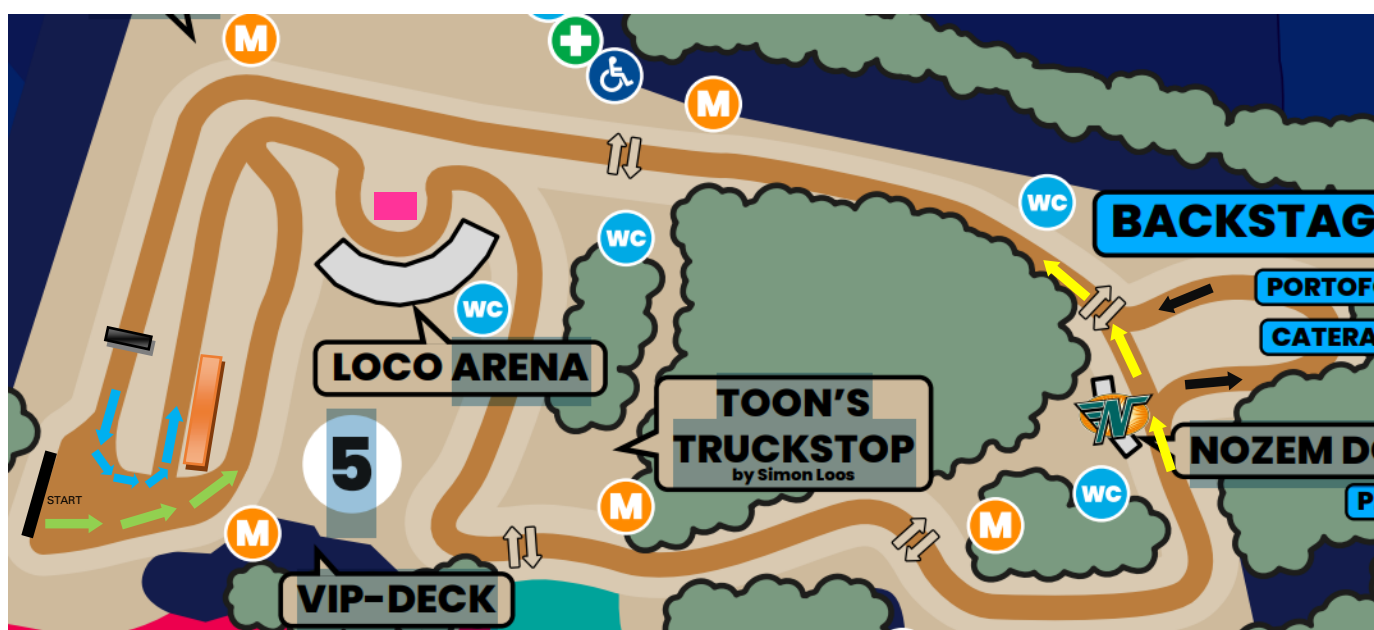
50cc, 125cc & Open Classic: Friday, July 18 – 17:00 to 17:30

85cc, Classic 125cc & Women: Saturday, July 19 – 17:30 to 18:00

250cc, 500cc & Superfinal: Sunday, July 20 – 17:15 to 17:45

8. Track Details

The **starting corner and first straight** are only used at the beginning of the race. After the first pass by the timekeeping system, all riders will make a sharp 180-degree left turn and pass the pitlane. This setup applies to all classes. On the track map, green arrows indicate the start location, blue arrows mark the sharp turn taken after the first lap, and the orange rectangle shows the pitlane location.



Shortened circuit

For the **50cc and 85cc classes**, a shortened version of the circuit is used. These riders skip one loop of the track. At the well-known Nozemdome, they go straight through the structure instead of turning right into the loop. This shortcut is marked with yellow arrows on the map. All other classes follow the full circuit, as indicated by black arrows..



9. Diversen

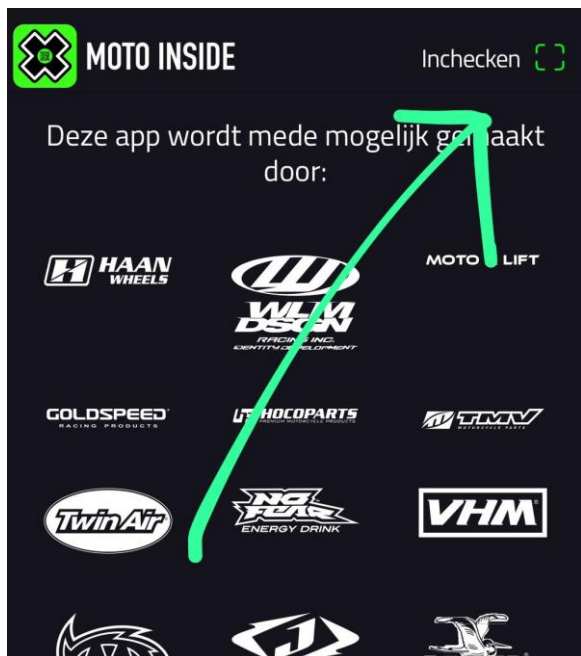
- The Invitees Paddock follows its own rules, which are monitored for compliance. These can be found at www.livingfortheweekend.mx.
- Spraying sand toward the audience while riding on the track is strictly prohibited.
- Bringing your own food and drinks is allowed within the Paddock.
- Electricity is available in the Invitees Paddock. Please bring long extension cords (minimum 50 meters). An example of the plug is shown at the end of this letter.
- Be mindful of theft. Unfortunately, thieves may disguise themselves as paddock guests. Keep your belongings secured and report suspicious behavior.
- Any violation of applicable regulations may lead to consequences not only for the offender, but also for the rider and their accompanying group.
- The 50cc class has its own assistance protocol at the start. Participants will receive this separately via email and it is also available online.
- All assistants entering the Parc Fermé or pitlane must wear at least a T-shirt and shorts.
- Professional photo and video equipment may only be used in the Parc Fermé and pitlane by accredited press.
- Protests must be submitted to the KNMV jury within 30 minutes after the race.
- Assistants are only permitted in the Parc Fermé and pitlane, not on the track.
- Pets are not allowed anywhere at the Zwarte Cross, including the paddock.
- Toilet cassettes from campers/caravans may only be emptied at the designated waste depot.
- Heat protocol: the assistant entering the Parc Fermé must be able to provide the rider with water and shade. Bring an umbrella, water, and a towel. At the entrance of the Parc Fermé is a tent with a fresh water tap to refill bottles.

And finally: have fun, show respect, clean up after yourself – act like you're at home!



Attachments

You can find your **Moto Inside QR code** by clicking the 'Check-in' button:



Power **plug type illustration** for paddock electricity access

